

SR Pro Display hardware specifications

DisplayOptics	Dimenco clear view lenticular lens™
Size	31.5 inch diagonal
Resolution	8K UHD (7680 x 4320)
Aspect ratio	16:9
Refresh rate	60 Hz
Brightness	400 cd/m2
Crosstalk	< 2%
Optimal viewing distance	60 ± 20 cm
Optimal viewing angle	± 30° (-30° to +30°)
Color	100 % Adobe RGB, 100 % sRGB, 100 % Rec709, 98 % DCI-P3
Contrast	1300:1

Sensors	
Eye-tracking	Intel RealSense D455
Hand tracking	Leap Motion Controller

Connectivity	
Video input	2x DisplayPort 1.4
Data interfacing	1x USB-B 3.0 (hand-tracking and eye-tracking)

Power	
1x male IEC connector	100-230V 50/60Hz AC
Max power consumption	100W
Mains on-off power switch	

Dimensions ~ 730 x 620 x 300 mm (WxHxD)

Weight ~ 18 kg - 40 lbs (including stand)

Minimum PC requirements

CPU	Intel i7, 10th gen
GPU	Nvidia GeForce RTX 2080 Ti or GeForce RTX 30xx (but mainly determined by the end-user application(s))
I/O	2x DisplayPort 1.4, 1x USB 3.0



For any questions please see our FAQ at www.dimenco.eu
or contact us at support@Dimenco.eu

 DIMENCO

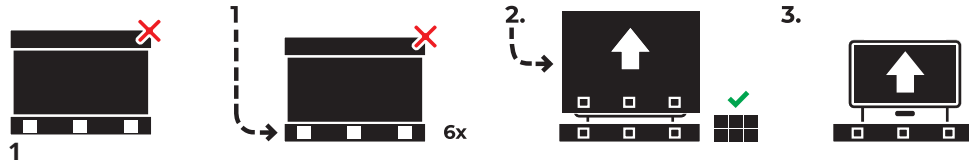
SR
PRO DISPLAY



Quick Start Guide

Unpacking & Setup

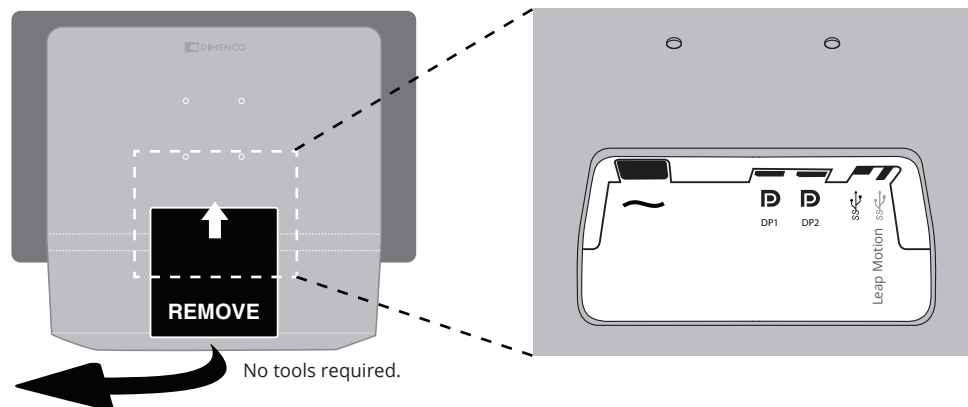
Unpacking the SR Pro Display



When unpacking the SR Pro display, make sure to first take off the top and mid section of the packaging by taking out the 6 clips at the bottom. Never lift the monitor out of the box by holding the screen.

To protect the SR Pro display during moving, please keep the packaging stored for future use.

Connecting the PC and power supply



Connecting

In order to connect the power supply and the dedicated pc, lift and remove the back hatch panel on the rear side of the display.

Power connector
2x Display ports
1x USB 3.0 Cable

Installing the SR platform

To install the SR platform do the following steps:

- Go to <https://www.srapstore.com/download-platform>
- Click on the button 'Install SR Platform'.
- Log in or create an account to download the software.
- Once the installer is downloaded, double click to install the SR platform.
- Follow the instructions of the installer and install all the components.
- Restart the PC

And additionally, to enjoy content.



- Go to www.srapstore.com
- Click on the button 'Install Desktop app'
- Once the installer is downloaded, double click to install the SR App Store.
- Log in into their account
- Explore the software available in the SR App Store

