

SR (Pro) Display hardware specifications

DisplayOptics	Dimenco clear view lenticular lens™
Size	31.5 inch diagonal
Resolution	8K UHD (7680 x 4320)
Aspect ratio	16:9
Refresh rate	60 Hz
Brightness	400 cd/m2
Crosstalk	< 2%
Optimal viewing distance	60 ± 20 cm
Optimal viewing angle	± 30° (-30° to +30°)
Color	100 % Adobe RGB, 100 % sRGB, 100 % Rec709, 98 % DCI-P3
Contrast	1300:1

Sensors

Eye-tracking	Intel RealSense D455
Hand tracking (SR Pro)	Leap Motion Controller

Connectivity

Video input	2x DisplayPort 1.4
Data interfacing	1x USB-B 3.0 (hand-tracking and eye-tracking)

Power

1x male IEC connector	100-230V 50/60Hz AC
Max power consumption	100W
Mains on-off power switch	

Dimensions

~ 730 x 620 x 300 mm (WxHxD)

Weight

~ 18 kg - 40 lbs (including stand)

Minimum PC requirements

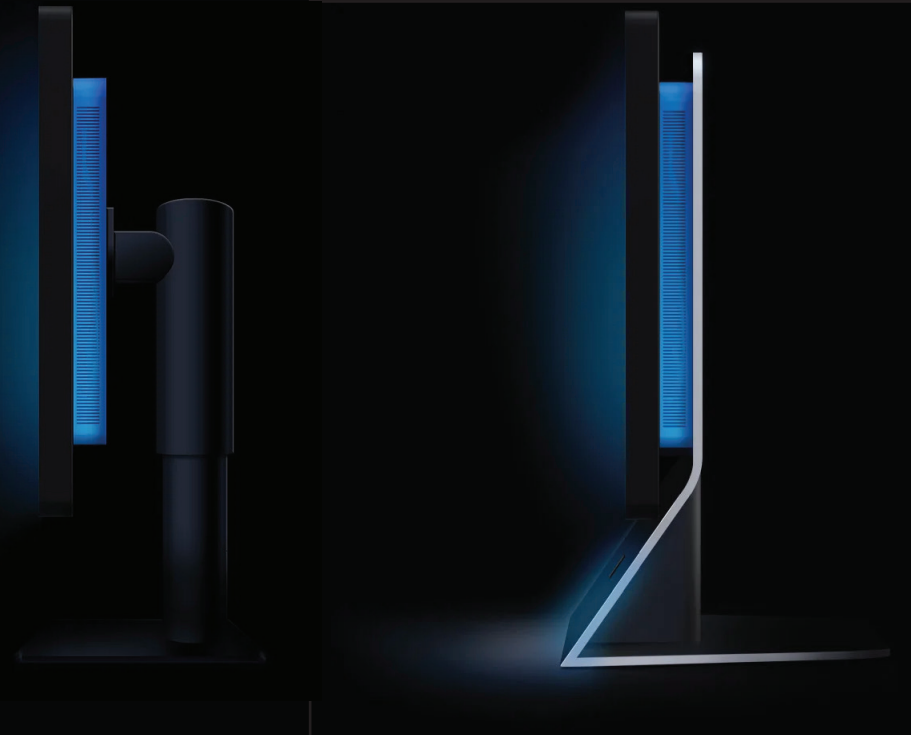
CPU	Intel i7, 10th gen
GPU	Nvidia GeForce RTX 2080 Ti or GeForce RTX 30xx (but mainly determined by the end-user application(s))
I/O	2x DisplayPort 1.4, 1x USB 3.0



SR Pro Display

SR Display

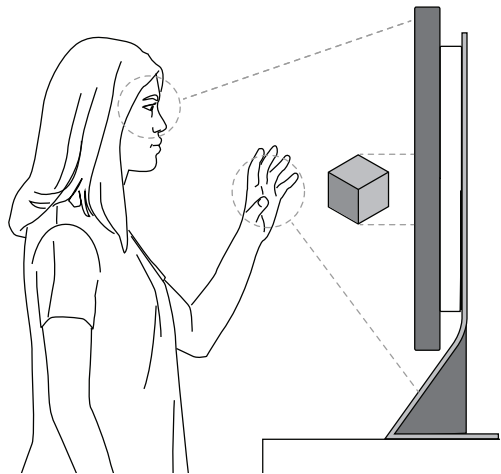
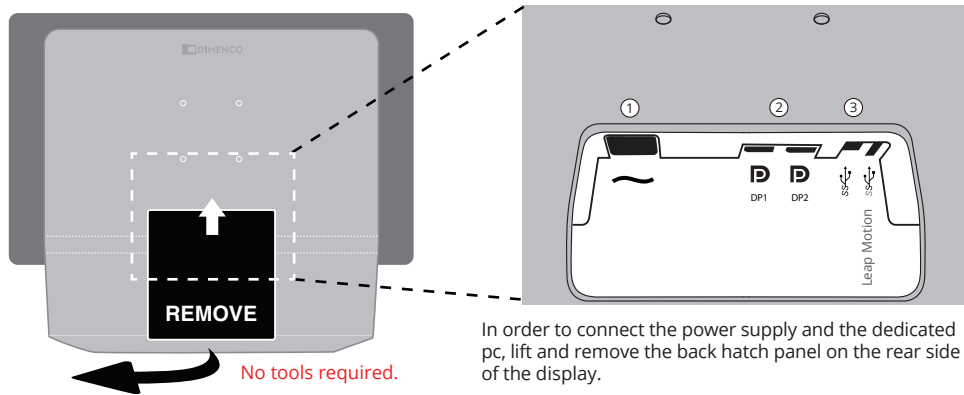
For any questions please see our
FAQ at www.dimenco.eu
or contact us at support@Dimenco.eu



Quick Start Guide

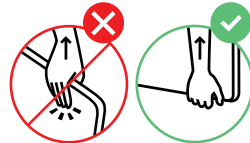
Setup

SR Pro Display Connecting the PC and power supply



SR Dashboard

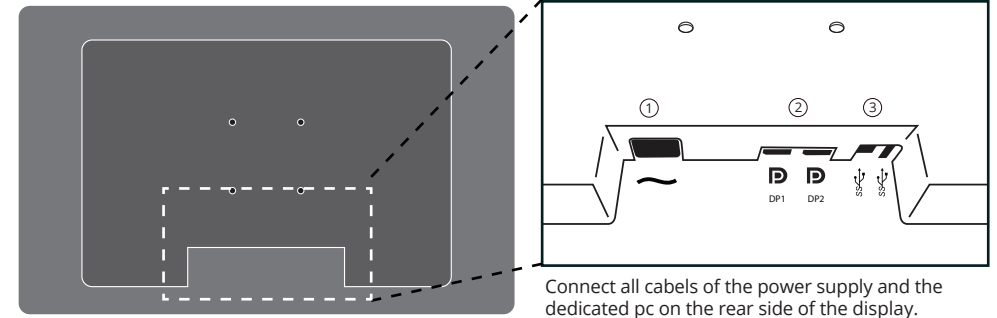
The unique SR eye and hand sensing technology enables immersive and natural experiences. Please consult the SR Dashboard for the best set-up and lighting conditions.



Please be careful with the front screen when unpacking and moving the display.

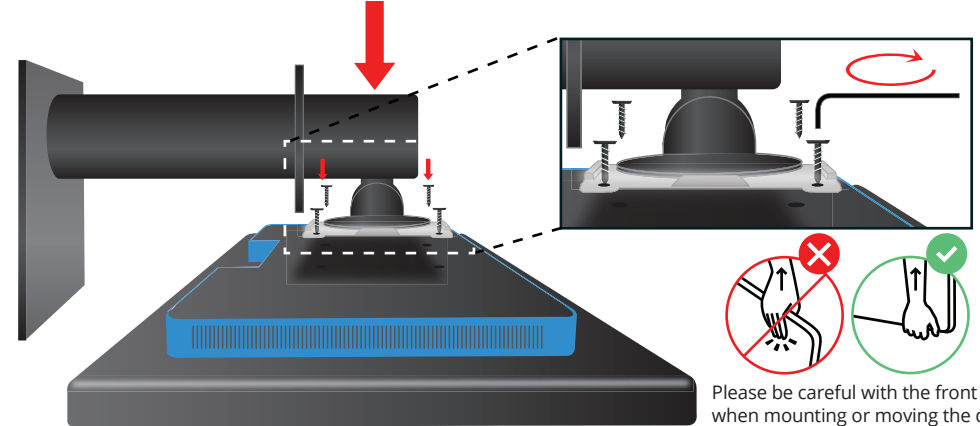
Setup

SR Display Connecting the PC and power supply

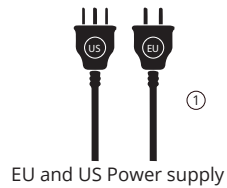


Mounting the display

Before connecting, simply mount the base foot horizontally on display.

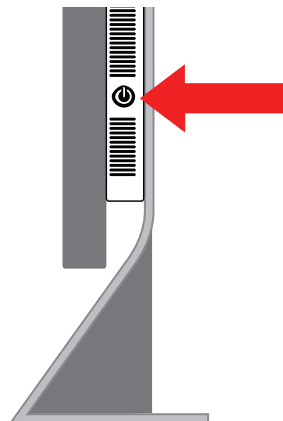
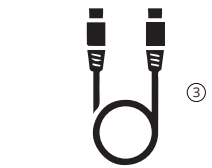
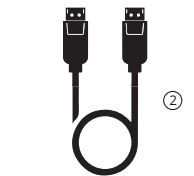


On/Off Please use power button on the side of the monitor



Included cables

Power connector
2x Display ports
1x USB 3.0 Cable



Installing the SR platform



www.srappstore.com

- Click on the button 'Install SR Platform'.
- Log in or create an account to download the software.
- Double click to install the SR platform.
- Restart the PC.

Drivers for hand tracking.

<https://developer.leapmotion.com/tracking-software-download>

For SR content

- Go to www.srappstore.com
- Click on the button 'Install Desktop app'
- Once the installer is downloaded, double click to install the SR App Store.
- Log in into their account to explore the software available in the SR App Store.